



L850-GL LTE Module

Perfect Wireless Experience

 24 Frequencies

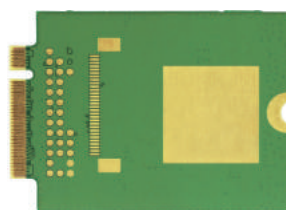
 450Mbps Downlink

 30Mbps Uplink

Global Approvals

FIBOCOM L850-GL is M.2 form factor high-end LTE wireless communication module which supports LTE-FDD/LTE-TDD/WCDMA.

The highest speed can reach Cat9 450Mbps DL and 50Mbps UL. L850-GL can cover global mobile network. It can be widely used in consumer electronics(Laptop/Tablet), gateway industry.



applicable regions:

- Global

L850-GL LTE Module

Perfect Wireless Experience

L850-GL LTE Module Technical Specifications

Product Feature

- LTE FDD: Band 1,2, 3, 4, 5, 7, 8, 11, 12, 13, 17, 18, 19, 20, 21, 26, 28, 29, 30, 66
- LTE TDD: Band 38, 39, 40, 41
- WCDMA: Band 1,2, 4, 5, 8
- M.2 30.0×42.0×2.3 mm
- Current Consumption: 6mA@sleep mode(DRX9)
AT Command Set: FIBOCOM proprietary AT commands/GSM 07.05/GSM 07.07
- Power Supply: 3.135V~4.4V(Typical 3.3v)
- Operating Temperature: -20°C~+65°C

Data

- LTE FDD: 450Mbps DL, 50Mbps UL
- LTE TDD: 347Mbps DL, 30Mbps UL
- UMTS: 385Kbps DL, 385Kbps UL
- DC-HSUPA+:42Mbps DL, 5.76Mbps UL
- SMS: MO/MT Text and PDU modes
- Cell broadcast

Interface

- USIM : 1.8V/3.0V
- PCIe(Windows 10)
- USB 2.0
- USB3.0(Non- windows)
- BodySar
- Clock

CA Combinations

- 2 CA:
1+3,5,8,18,19,20,21,26;2+2;2+4,5,12,13,17,29,30,66;3+3;3+5,7,8,19,20,28;4+4;4+5,12,13,17,29,30;5+7,30,66;7+7;7+20,28;12+30;13+66;29+30;40+40;41+41
- 3 CA:
2+2+5,2+2+13,3+3+7,3+7+7,3+3+20,4+4+5,4+4+13,5+66+66,13+66+66,66+66+2,66+66+66,1+3+7,1+3+19,1+3+20,1+19+21,2+4+5,2+4+13,2+5+30,2+12+30,2+29+30,3+7+20,3+7+28,4+5+30,4+12+30,4+29+30,5+66+2,13+66+2

Driver

- Win 10 / Android* / Linux* / Chrome OS

Approval

- CE/CCC/FCC/GCF/PTCRB etc 30+ Countries Certification
AT&T/Vodafone/Docomo etc 10+ Carriers

Note*: Planning

版权所有 © 深圳市广和通无线股份有限公司 | 广和通对此所含信息保留所有权利 | 邮箱 : info@fibocom.com | 总机 : +86 755-2673 3555